

SUPPORT



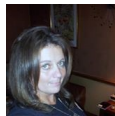
We need your support to help us to provide the much needed specialist equipment and activities for the children and young people with disabilities or life limiting illnesses.

Thank you to all our donors for your kind generosity. Enquiries are always welcome from any organisation or individual who would like to support our charity or anyone who feels that their child may benefit from our services.

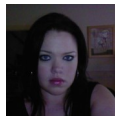
Katie Holt
Trustee



Sharon Sargent
Trustee



Lindsey Aldred
Fundraising Officer



Sally Hart
Fundraising Officer



www.blessingsindisguise.co.uk

"Santa in July" Nominations are open for those children who may have been seriously ill or battling a life-limiting illness over the last Christmas or for those who enjoying the next Christmas may not be an option. Please email blessingsindisguisecharity@gmail.com



Applications open all year round for disability equipment or to register.

See our website for information.
www.blessingsindisguise.co.uk

Blessingsindisguisecharity@gmail.com
01942 316113

Lilford House
St. Helens Road
Leigh
WN7 4HG



giftaid it
Make your gift go further at no expense to you!

"Creating positive changes to improve life's misfortunes, everyone deserves a Blessing in Disguise"



hello
JULY

July
2023



Company Reg. No: 8790053
Member of SFEDI & IOEE



Everyone deserves a Blessing in Disguise....

Blessing in Disguise Children's Charity is a not-for-profit organisation that enriches the lives of disadvantaged children and young people throughout the UK.

Blessing in Disguise creates a positive focus on enabling freedom to enjoy treasured memories to share with family and loved ones and provides a range of life enhancing experiences helping to improve the quality of life for children and young people with disabilities or life limiting illnesses.



*Blessing
In Disguise*

We are a socially responsible organisation, providing much needed support to many children, young adults & their families / carers by providing, free of charge, a range of life enhancing equipment, activities and social/ recreational opportunities for the whole family. Through personal experience, we know that it can often be difficult on other family members, who perhaps unfortunately miss out, but we will endeavour to encourage them to achieve positive changes. With the right funding we have the potential to increase the number of vulnerable people that we support each year, providing much needed equipment to more families across the UK and making a significant difference.

What we do...

We fundraise all year round to provide much needed support to children & young people, their families/carers by:

- Providing FREE specialist equipment
- Organising VIP Exclusive & Inclusive events & fun activities
- Working in partnership with other community groups & charities
- Creating treasured memories
- Promote social inclusion by hosting networking coffee mornings



We are very lucky to have some amazing volunteers here at Blessing in Disguise. Without their time and support many of our events would not be possible. June was volunteers week and we would like to say a BIG thank you to all our wonderful volunteers for everything they do.



We are supporting vulnerable families with "Cost of Living Parcels"
Are you struggling with the cost of living or know someone who is? For more information get in touch.



Feedback

"Thanks so much I'm overwhelmed at your kindness. I'm 100% satisfied with everything I received, I was really overwhelmed with the hamper! It was a massive help for us! Can't thank you all for what you do to help people your all amazing."

"Everything we received was gratefully appreciated and very much needed the project is absolutely fantastic. "

With your kind support, Blessing in Disguise has provided the following equipment/services:

Mobility and walking aids, special needs wheelchairs, buggies & accessories; high chairs, low chairs, posture seating; communication aids and adaptations, monitoring equipment; specialist beds & bedding; safety equipment; Lock-down activity and support packs; social links & networking during lock-down; various home equipment, furniture; Christmas grotto, Easter eggs & toys; dark dens & sensory equipment; communication ICE badges, lanyard and wristbands; disabled swim therapy sessions; family respite breaks & family days out; specially adapted fun fair and exclusive access for disabled children.. plus much, much more...