

SUPPORT



We need your support to help us to provide the much needed specialist equipment and activities for the children and young people with disabilities or life limiting illnesses.

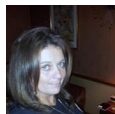
Thank you to all our donors for your kind generosity.

Enquiries are always welcome from any organisation or individual who would like to support our charity or anyone who feels that their child may benefit from our services.

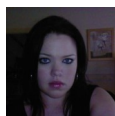
Katie Holt  
Trustee



Sharon Sargent  
Trustee



Lindsey Aldred  
Fundraising Officer



Sally Hart  
Fundraising Officer



[www.blessingsindisguise.co.uk](http://www.blessingsindisguise.co.uk)



If you are the parent or carer of a child with a disability or special need, ensure that they don't miss out on all the fun and skills that can be gained by getting wet!

We are now taking bookings for the next block of swimming lessons to start March 2022.

Current Swim-Ability Lessons booked up  
3rd December to 11th February 2022

Applications open all year round for disability equipment or to register.

See our website for information.

W: [www.blessingsindisguise.co.uk](http://www.blessingsindisguise.co.uk)

E: [Blessingsindisguisecharity@gmail.com](mailto:Blessingsindisguisecharity@gmail.com)

T: 01942 316113

6A Enterprise House  
Wigan Enterprise Park  
Seaman Way  
Wigan. WN2 2LE



giftaid it  
Make your gift go further at no expense to you!

"Creating positive changes to improve life's misfortunes, everyone deserves a Blessing in Disguise"

Blessed  
TO BE A  
Blessing  
ACTS OF KINDNESS  
FOR CHRISTMAS

Blessing  
in  
Disguise

Registered Charity No 1161139



December  
2021



Company Reg. No: 8790053  
Member of SFEDI & IOEE



Everyone deserves a Blessing in Disguise....

Blessing in Disguise Children's Charity is a not-for-profit organisation that enriches the lives of disadvantaged children and young people throughout the UK.

Blessing in Disguise creates a positive focus on enabling freedom to enjoy treasured memories to share with family and loved ones and provides a range of life enhancing experiences helping to improve the quality of life for children and young people with disabilities or life limiting illnesses.



*Blessing  
In Disguise*

We are a socially responsible organisation, providing much needed support to many children, young adults & their families / carers by providing, free of charge, a range of life enhancing equipment, activities and social/ recreational opportunities for the whole family. Through personal experience, we know that it can often be difficult on other family members, who perhaps unfortunately miss out, but we will endeavour to encourage them to achieve positive changes. With the right funding we have the potential to increase the number of vulnerable people that we support each year, providing much needed equipment to more families across the UK and making a significant difference.

What we do...

We fundraise all year round to provide much needed support to children & young people, their families/carers by:

- Providing FREE specialist equipment
- Organising VIP Exclusive & Inclusive events & fun activities
- Working in partnership with other community groups & charities
- Creating treasured memories
- Promote social inclusion by hosting networking coffee mornings

Blessing in Disguise sensory friendly Grotto for children with disabilities and sensory difficulties 13th to 17th Dec. Visiting Santa is something that most families take for granted, for some children it can be a sensory overload and

overwhelming. Our families with children with additional sensory needs can come and meet Santa in a relaxed atmosphere. (Following covid guidelines)



We have been lucky enough to be donated a limited amount of tickets for Silcock's Winter Wonderland Charity Night for children with special needs.

Blessing in Disguise are holding a fundraiser at the North West Museum of Road Transport in St. Helens with an exclusive Christmas Bus Grotto on Saturday 4th and Sunday 5th December.



With your kind support, Blessing in Disguise has provided the following equipment/services:



Mobility and walking aids, special needs wheelchairs, buggies & accessories; high chairs, low chairs, posture seating; communication aids and adaptations, monitoring equipment; specialist beds & bedding; safety equipment; Lock-down activity and support packs; social links & networking during lock-down; various home equipment, furniture; Christmas grotto, Easter eggs & toys; dark dens & sensory equipment; communication ICE badges, lanyard and wristbands; disabled swim therapy sessions; family respite breaks & family days out; specially adapted fun fair and exclusive access for disabled children.. plus much, much more...